

Installguide KaWo Drucker for Windows 10

Drucker-AG KaWoEins e.V.

July 25, 2019

Contents

| | | |
|-----|--|---|
| 1 | Driverdownload | 2 |
| 2 | Shortinstruction | 2 |
| 2.1 | Printerinstalldialog | 2 |
| 2.2 | edditing printer preferences | 4 |
| 2.3 | editing printer properties (recommended) | 4 |
| 3 | Starting to print | 5 |

1 Driverdownload

First of all you have to install the driver for our printermodell from [this](#) site. After the download finished you have to unpack it to your directories.

If you want or need it, there is an installvideo, which you can find and download [here](#). Otherwise just continue reading.

2 Shortinstruction

Please open your Control Panel and go to “Devices and Printer”. There you choose “Add Printer”.

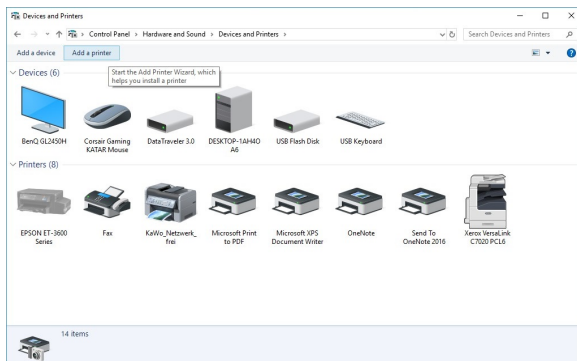
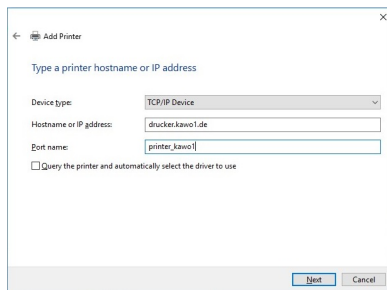


Figure 1: Contol Panel → Hardware and Sound → Devices and Printer

2.1 Printerinstalldialog

1. Please select the “The printer I want isn’t listed”.
2. Open the drop-down menu and select “Add printer using a TCP-/IP-Adresse or hostnamens” and press “Next”.
3. Enter the folloing:



| Option | Value |
|-----------------------|---------------------------------|
| Device type | “TCP/IP Device” |
| Hostname or IP-Adress | “drucker.kawo1.de” |
| Port name | here you can choose by your own |

Figure 2: Hostname or IP address

- Wait until the detection process ends and continue with Standard-Settings (“Generic Network Card”) and press “Next”.
- Press “Have Disk” and then “Browse”. After that you navigate to the destination, where you unpacked the drivers. Then you select the file “x3NMARX.inf” and confirm with “OK”.

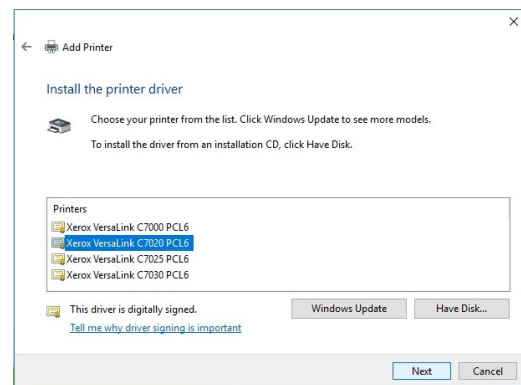


Figure 3: Driverselection

- Select “Xerox VersaLink C7020 PCL6” and go on.

- (if you get asked) In order to make sure, that you use the right version of the driver, we recommend you to select “Replace the current driver” and continue.
- Name the printer as you like
- Wait
- It is important, that you **don't** share the printer.
- If you want you can define the printer as your new default printer (you can also do this at another time) and “Finsh”

2.2 editing printer preferences

1. rightclick at the new printer → printerproperties.
2. Select the tab “Configuration” and scroll down.

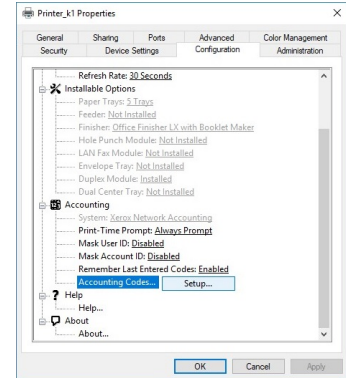
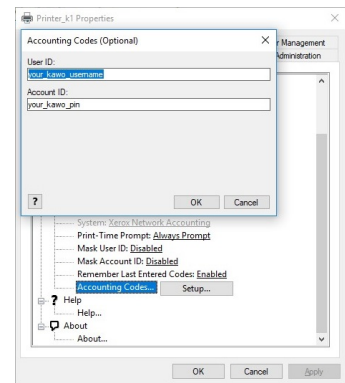


Figure 4: Printer preferences → Configuration

3. Click at “Accounting Codes”, which is located under “Accounting” and press the button “Setup”

- a) User-ID: *#your kawo-username*
- b) Account-ID: *#your kawo-pin*



2.3 editing printing properties (recommended)

1. rightclick at the new printer → printersettings.

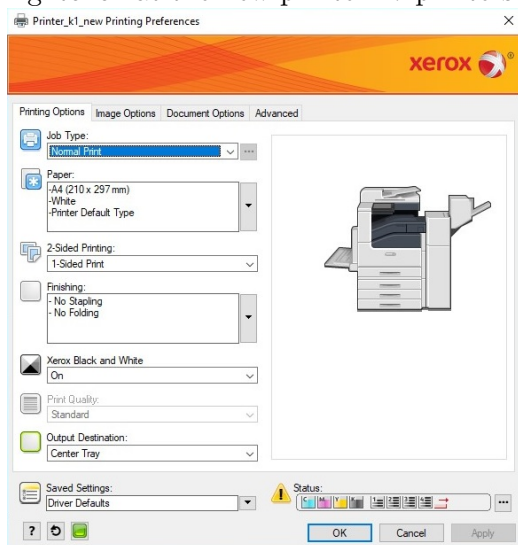


Figure 5: Printing properties

| Option | recommended value |
|-----------------------|--------------------------|
| Job Type | “Normal” |
| Paper | leave the default values |
| 2-Sided-Printing | “1-Sided-Printing” |
| Finishing | no Stapling, no Folding |
| Xerox Balck and White | “On” |
| Output Destination | “Center Tray” |

2. Press “OK”



3 Starting to print

Now you are ready and our printer is installed.

You are now able to print on our new printer in the printer room. You can print 2-Sided or you can fold or staple your printing job. You can also choose between A3 and A4, as well as colored and black and whitw printing.

We recommend you, **before** you start printing, to read our printig guide. It is really important because, as you have many options to print, there are as many things, which can go wrong.

You just have to click [here](#) (at the moment you have to in the testing group and login at the website) and you will be forwarded to our printig guides.

We hope everything is working. If there are still questions, which can't be answered by our guides, pleas write an e-mail to [us](#).

List of Figures

| | | |
|---|---|---|
| 1 | Contol Panel → Hardware and Sound → Devices and Printer | 2 |
| 2 | Hostname or IP address | 3 |
| 3 | Driverselection | 3 |
| 4 | Printer preferecnces → Configuration | 4 |
| 5 | Printer properties | 4 |